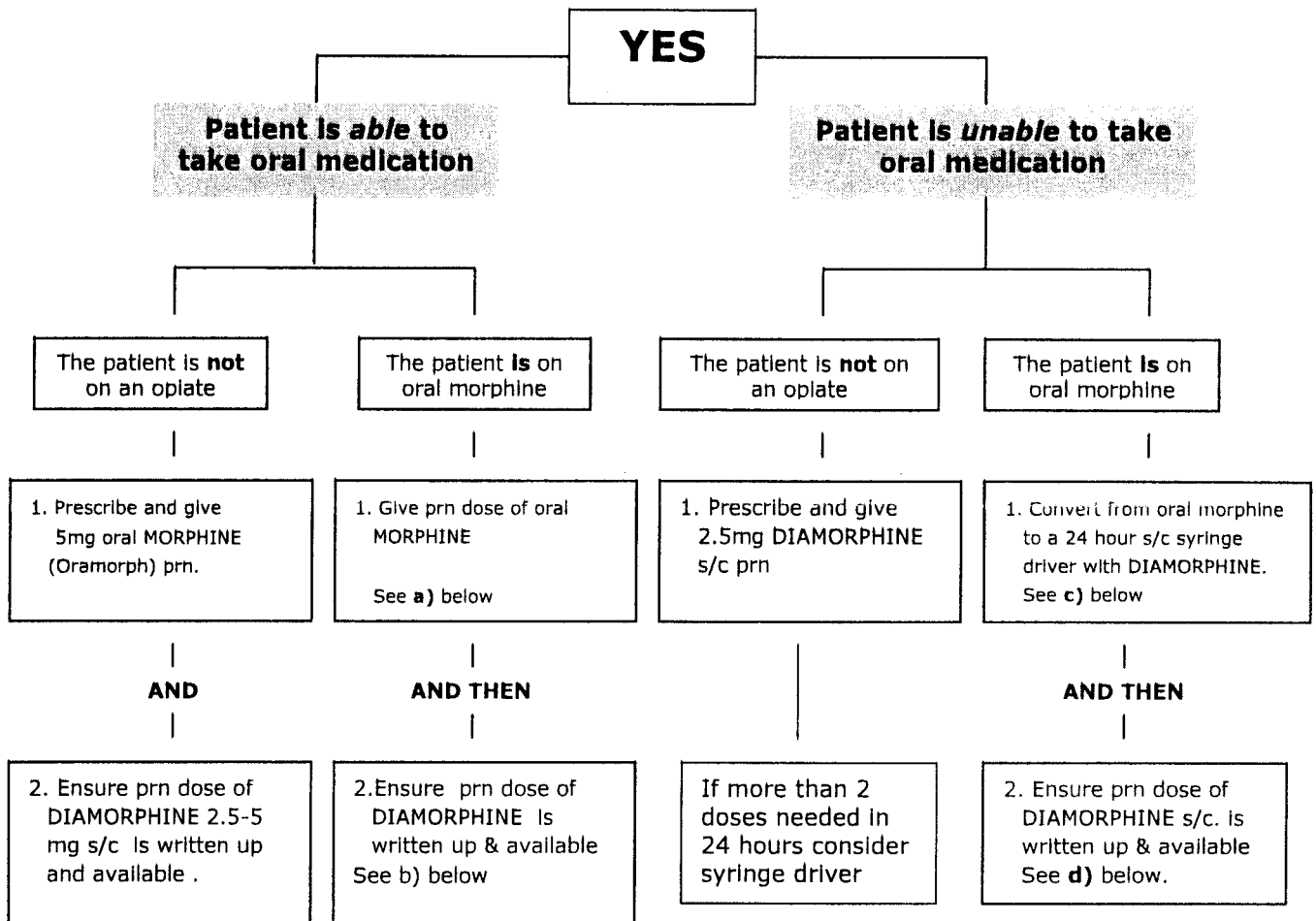


Is the Patient in Pain?



If patient is **NOT** in pain ensure prn doses of morphine / diamorphine are written up and available as above

PRN doses of morphine / diamorphine should not be given more often than 2 hourly without medical review

Examples of conversion:

a) To work out prn dose of oral morphine

1. Total daily dose of morphine e.g. MST 30mg bd = 60 mg / 24 hours
2. Divide total daily dose of morphine by 6 e.g. $60\text{mg} \div 6 = 10\text{mg}$ oral morphine prn

b) If on oral morphine only & prn dose of diamorphine is required:

1. Work out prn dose of oral morphine as above e.g. $60\text{mg} \div 6 = 10\text{mg}$
2. Divide the prn dose of morphine by 3 e.g. $10\text{mg} \div 3 = 2.5 - 5\text{mg}$

c) To work out s/c diamorphine infusion dose

1. Total daily dose of morphine e.g. MST 30mg bd = 60mg
2. Add in any prn doses that have been given e.g. Oramorph 10mg x 3 = 30mg + 60mg (MST) = 90 mg
3. Divide total dose of morphine by 3 e.g. $90\text{mg} \div 3 = 30\text{mg}$ diamorphine / 24 hours

d) To work out prn s/c diamorphine dose

1. Total daily dose of diamorphine e.g. 90mg
2. Divide by 6 e.g. $90\text{mg} \div 6 = 15\text{mg}$

To convert from other strong opioids seek specialist advice